



**LOVE
YOUR FEET
MORE.**



by Honeywell

PRODUCT CATALOGUE

SOLE FEATURES



Electrical Resistant

Electrical Hazard (EH) Protection reduces the danger of accidental contact with live electrical circuits in accordance with ASTM F2413-18



Antistatic

Minimises the build up of electrostatic charges and provides protection against the risk of spark ignition for such hazards as flammable materials and gases.



Electrostatic Discharge (ESD) Protection

Electrostatic discharge protection (ESD) to protect wearers from damaging sensitive electronic equipment or igniting flammable materials.



HYDRoStop®

Offers a 3 year guarantee against the effects of hydrolysis and microbiotic attack on the sole.



Heat resistant sole (266° F)



Heat resistant sole (572° F)



Abrasion resistant sole



Sole resistant to organic oils and fats



Sole resistant to mineral oils and acids



Cut resistant sole

SPECIAL FEATURES



Metatarsal Protection

Provides increased protection against the risk of impact and crush injuries. Metatarsal guards coupled with safety toe caps offer complete fore foot protection.



Sole Penetration Protection

Offers the reduced risk of sharp objects penetrating the sole and entering the foot.



SAFETYcell® Protection

Fully integrated protective shell offers enhanced abrasion and cut resistance from harsh working conditions.



Water Resistant leather



Waterproof footwear



Toe Bumper



HEELguard



Hi-Vis Reflective Safety Trim



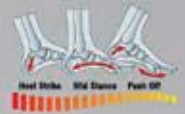
Snug Fit Heel Contour System

COMFORT FEATURES



COMFORTcushion® Impact Absorption

Provides superior cushioning and shock absorption helping to reduce foot, leg and back fatigue.



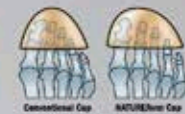
NANO/ite® Footbed

Massages feet as you walk, offering ultimate comfort and enhancing blood flow to reduce fatigue.



NATUREform® wide profile Type 1 safety toe cap

Offers a wide profile shape for greater comfort and ensuring toes are not in contact with the toe cap.



Antimicrobial Technology

Revolutionary anti-bacterial solution provides protection against odour, staining and deterioration caused by bacteria, fungus and other micro-organisms.



SOFTstride® Contour Comfort Support

Low density urethane foam contours to the individual foot shape to provide ultimate comfort and support.

TOE CAP FEATURES



Steel Safety Toe Cap

Type 1 Steel toe cap offers protection against drop and crush injuries. Developed to withstand a force of 200 joules.



Composite Safety Toe Cap

Non-Metallic Type 1 toe cap protection against drop and crush injuries. Lightweight and airport friendly. Developed to withstand a force of 200 joules.



SLIP RESISTANCE



Slip Resistant Sole

The following abbreviations provide information about slip resistance ratings:

- SRA:** Slip resistance tested on ceramic tile floor with sodium lauryl sulphate (SLS) solution.
- SRB:** Slip resistance tested on steel floor with glycerol.
- SRC:** Slip resistance tested on both ceramic tile floor with SLS solution and steel floor with glycerol.

CONTENTS

| | | |
|---|--|-----------|
| | 45 Series Dual Density PU / TPU Footwear | 4 |
|  | 55 Series Dual Density PU / Rubber Footwear | 8 |
| | 55 Metatarsal Series Penetration Resistant Dual Density PU/Rubber Footwear | 12 |
| | 65 Series Waterproof Mining/Caustic Resistant Footwear | 13 |
| <hr/> | | |
| | 22 Series PVC Safety Gumboot | 15 |
|  | 24 Series Thermal PU Safety Gumboot | 16 |
| | 26 Series Dual Density PU Non Safety Footwear | 17 |
| | 34 Series Dual Density PU Footwear | 18 |
| <hr/> | | |
|  | 40 Series Active Range EVA Midsole/Rubber Outsole | 22 |
| <hr/> | | |
|  | 49 Series Dual Density PU / Rubber Ladies Footwear | 24 |
| <hr/> | | |
|  | 38 Series Dual Density PU Executive Footwear | 26 |
| <hr/> | | |
|  | 66 Series Smelter Footwear | 27 |
| | 66 Series Fire & Emergency Services Footwear | 28 |
| <hr/> | | |
| | Accessories | 29 |
| | Index | 30 |



**LOVE
YOUR FEET
MORE.**

 [Facebook.com/oliversafetyfootwear](https://www.facebook.com/oliversafetyfootwear)

 [@oliverfootwear](https://www.instagram.com/oliverfootwear)

45 SERIES COMFORT TECHNOLOGY

DUAL DENSITY PU / TPU FOOTWEAR



COMPLIES WITH

AS 2210.3:2019
EN ISO 20345:2011
ASTM F2413-18

COMFORTcushion® Impact Absorption System uses a combination of cellular urethane and PORON¹

Full lining infused with eco friendly Odorban² Control Technology to absorb odour for optimum freshness and hygiene

Long wearing TPU outsole designed to self clear rocks and debris from tread. Excellent abrasion resistance

Latex toe cap liner for added comfort
Protection strip



Water resistant leather

Bevelled heel for excellent slip resistance

Stabilising and support shank

Shock absorbing Polyurethane midsole

Oliver Comfort Footbed enhances natural air flow; infused with Odorban² Control Technology.

Oliver SOFTstride® open cell low density urethane foam for comfort and contour support

¹ PORON® 2013 Rogers Corporation. All Rights Reserved
² © Devan Chemicals NV 2015

45 SERIES COMFORT TECHNOLOGY



Odorban™ Control Technology

The Oliver Comfort System footbed now includes Odorban™ Control Technology for greater comfort. This anti microbial solution controls the bacteria that cause odour, stains and product deterioration. The new comfort footbed also has perforated air channels to promote natural airflow to the feet and help maintain freshness.

COMFORTcushion® Impact Absorption System

COMFORTcushion® uses a combination of cellular urethane and PORON® performance cushioning to protect the heel and ball of the foot by providing superior cushioning and shock absorption... reducing foot, leg, and lower back fatigue.

Oliver SOFTstride® Comfort System

Oliver SOFTstride® Comfort System works to soften and absorb the impact on the foot stride after stride. A layer of open cell low density urethane foam built into the insole contours to the individual foot shape to provide ultimate comfort and support. The unique Oliver SOFTstride® gives added reassurance to help you get through those long hours on your feet.

Non Metallic Composite Toe Cap Technology

Oliver has pioneered a new innovative Hi-Impact Non-Metallic Composite type 1 toe cap which is more than 40% lighter than traditional steel toe caps and still exceeds the Australian Standard AS 2210.3.



45-632Z

150MM WHEAT ZIP SIDED BOOT

- Water resistant nubuck leather
- Full lining and comfort footbed infused with **Odorban™** Control Technology
- Fully non-metallic
- Convenient side zip

Sizes: 5 - 14, 6½ - 10½

EXTRA FEATURES:



45-652Z

150MM STONE ZIP SIDED BOOT

- Water resistant nubuck leather
- Full lining and comfort footbed infused with **Odorban™** Control Technology
- Fully non-metallic
- Convenient side zip

Sizes: 5 - 14, 6½ - 10½

EXTRA FEATURES:



**NEW
RELEASE**



45-645Z

150MM BLACK ZIP SIDED BOOT

- Water resistant full grain leather
- Full lining and comfort footbed infused with **Odorban™** Control Technology
- Fully non-metallic
- Convenient side zip

Sizes: 5 - 14, 6½ - 10½

EXTRA FEATURES:



45-632

150MM WHEAT LACE UP BOOT

- Water resistant nubuck leather
- Full lining and comfort footbed infused with **Odorban™** Control Technology
- Fully non-metallic

Sizes: 5 - 14, 6½ - 10½



45-645

150MM BLACK LACE UP BOOT

- Water resistant full grain leather
- Full lining and comfort footbed infused with **Odorban™** Control Technology
- Fully non-metallic

Sizes: 5 - 14, 6½ - 10½



COMFORT GUARANTEE†

† Must produce dated receipt and guarantee tag

Try a pair of correctly fitted Oliver AT45 Boots for 30 days and, if you are not completely satisfied, return them to the specialist dealer you bought them from for exchange or refund. †

All AT45 styles are airport friendly



SOLING TECHNOLOGY



AT's All Terrain TPU Soling Technology

- Lightweight, shock absorbing low density PU (Polyurethane) midsole which cushions the foot on impact to provide unmatched comfort and help reduce foot, leg and lower back fatigue.

- High density hard-wearing TPU (Thermo Plastic Urethane) outsole provides superior grip and abrasion resistance.
- Heat resistant outsole to temperatures of 130° Celsius.
- Electrical Hazard (EH) Protection.

- Reduces danger of accidental contact with live electrical circuits in accordance with ASTM F2413-18.
- Resistant to most oils, acids and chemicals.
- Superior resistance to abrasion,

- splitting and cracking.
- Superior slip resistance, rated SRB.
- Will not mark floors.

45 SERIES | DUAL DENSITY PU / TPU FOOTWEAR



45-627 BROWN ELASTIC SIDED BOOT

- Water resistant pull up leather
- Comfort footbed infused with **Odorban™** Control Technology
- Fully non-metallic

Sizes: 5 - 14, 6½ - 10½



45-630Z 130MM WHEAT ZIP SIDED BOOT

- Water resistant nubuck leather
- Full lining and comfort footbed infused with **Odorban™** Control Technology
- Fully non-metallic
- Convenient side zip

Sizes: 5 - 14, 6½ - 10½

EXTRA FEATURES:



45-640Z 130MM BLACK ZIP SIDED BOOT

- Water resistant full grain leather
- Full lining and comfort footbed infused with **Odorban™** Control Technology
- Fully non-metallic
- Convenient side zip

Sizes: 5 - 14, 6½ - 10½

EXTRA FEATURES:

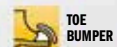


45-650Z 130MM STONE ZIP SIDED BOOT

- Water resistant nubuck leather
- Full lining and comfort footbed infused with **Odorban™** Control Technology
- Fully non-metallic
- Convenient side zip

Sizes: 5 - 14, 6½ - 10½

EXTRA FEATURES:



OLIVER
30
DAY

COMFORT GUARANTEE!

† Must produce dated receipt and guarantee tag

Try a pair of correctly fitted Oliver AT45 Boots for 30 days and, if you are not completely satisfied, return them to the specialist dealer you bought them from for exchange or refund. †

✓

COMPLIES WITH

AS 2210.3:2019
EN ISO 20345:2011
ASTM F2413-18

45 SERIES COMFORT TECHNOLOGY



COMFORT cushion Impact Absorption



NATURE force wide profile Type 1 safety toe cap



Water Resistant leather



Non-Metallic Composite Toecap



SOFTstride Contour Comfort Support



Antimicrobial Technology

SOLING TECHNOLOGY



130°C Heat Resistant sole (266° F)



Abrasion Resistant sole



Cut Resistant sole



Slip Resistant sole



Sole resistant to mineral oils and acids



Sole resistant to organic oils and fats



Electrical Hazard Resistant

AT45 SERIES



55 SERIES | DUAL DENSITY PU / RUBBER FOOTWEAR



COMPLIES WITH

AS 2210.3:2019
EN ISO 20345:2011
ASTM F2413-18



³ Kevlar 2013 DuPont

55 SERIES COMFORT TECHNOLOGY

- COMFORTcushion Impact Absorption
- NATUREform wide profile Type 1 safety toe cap
- Water Resistant leather
- Steel Safety Toe Cap
- Toe Bumper
- NANOlite footbed
- Antimicrobial Technology
- SOFTstride Contour Comfort Support
- HEELguard



NANOlite[®] Technology

The Oliver Comfort System now has a unique **NANOlite[®]** footbed for greater comfort and well-being. The gently raised surface of the sole massages your feet as you walk, promoting greater blood flow to help reduce fatigue. Plus, a perforated foam air control layer enhances air circulation, reducing odour.

COMFORTcushion[®] Impact Absorption System

Oliver's unique **COMFORTcushion[®]** uses a combination of cellular urethane and **PORON[®]** performance cushioning to protect the heel and ball of the foot, providing superior cushioning and shock absorption at the heel. This constant impact absorption helps reduce foot, leg and lower back fatigue.

NATUREform[®] Type 1 Toe Cap

Oliver **NATUREform[®]** toe caps have a wide profile shape to suit your foot and are padded with a latex cushion liner to ensure toes are comfortable and not in contact with the cap. Oliver boots with **NATUREform[®]** caps are licensed to the Australian Standard AS 2210.3.

Oliver SOFTstride[®] Comfort System

Oliver **SOFTstride[®]** Comfort System works to soften and absorb the impact on the foot stride after stride. A layer of open cell low density urethane foam built into the insole contours to the individual foot shape to provide ultimate comfort and support. The unique Oliver **SOFTstride[®]** gives added reassurance to help you get through those long hours on your feet.

AT55 SERIES



LIGHTEST 55 SERIES EVER



55-320 BLACK ELASTIC SIDED BOOT

- Water resistant full grain leather
 - Premium **COOLstep**® lining for optimum freshness
 - **NANOlite**® footbed for greater comfort
- Sizes: 4 - 14, 6½ - 12½



55-322 WHEAT ELASTIC SIDED BOOT

- Water resistant nubuck leather
 - Premium **COOLstep**® lining for optimum freshness
 - **NANOlite**® footbed for greater comfort
- Sizes: 4 - 14, 6½ - 12½



55-332 150MM WHEAT LACE UP BOOT

- Water resistant nubuck leather
 - Premium **COOLstep**® lining for optimum freshness
 - **NANOlite**® footbed for greater comfort
- Sizes: 4 - 14, 6½ - 12½



55-332Z 150MM WHEAT ZIP SIDED BOOT

- Water resistant nubuck leather
 - Premium **COOLstep**® lining for optimum freshness
 - **NANOlite**® footbed for greater comfort
 - Convenient quick release zipper
- Sizes: 4 - 16, 6½ - 12½ **NEW EXTENDED SIZE**



55-352Z 150MM STONE ZIP SIDED BOOT

- Water resistant nubuck leather
 - Premium **COOLstep**® lining for optimum freshness
 - **NANOlite**® footbed for greater comfort
 - Convenient quick release zipper
- Sizes: 4 - 14, 6½ - 12½

NEW RELEASE

OLIVER 30 DAY COMFORT GUARANTEE†

Try a pair of correctly fitted Oliver AT55 Boots for 30 days and, if you are not completely satisfied, return them to the specialist dealer you bought them from for exchange or refund. †

SOLING TECHNOLOGY



| | | | | | | |
|--|--------------------------------|---------------------------|----------------------------|---|--|--|
| 300°C Heat Resistant sole (572° F) | Abrasion Resistant sole | Cut Resistant sole | Slip Resistant sole | Sole resistant to mineral oils and acids | Sole resistant to organic oils and fats | Antistatic discharges static build-up |
|--|--------------------------------|---------------------------|----------------------------|---|--|--|

AT's All Terrain Dual Density PU/Rubber Soling technology

- Lightweight, shock absorbing low density PU (Polyurethane) midsole which cushions the foot on impact to provide unmatched comfort and help reduce foot, leg and lower back fatigue.
- All Terrain nitrile rubber outsole with new deeper tread profile and self-cleaning design for superior grip and durability.
- Heat resistant outsole to temperatures of 300° Celsius.
- Anti Static minimises the build up of electrostatic activity and provides protection against the risk of spark ignition hazards including flammable materials and gases.
- Resistant to mineral oils, acids, alkalis, animal fats and oils.
- Superior resistance to abrasion and cutting.
- Excellent slip resistance, rated SRC.

55

SERIES

DUAL DENSITY PU / RUBBER FOOTWEAR



55-337

150MM BROWN LACE UP BOOT

- Water resistant pull up leather
- Premium **COOLstep**® lining for optimum freshness
- **NANOlite**® footbed for greater comfort

Sizes: 4 - 14, 6½ - 12½



55-345

150MM BLACK LACE UP BOOT

- Water resistant full grain leather
- Premium **COOLstep**® lining for optimum freshness
- **NANOlite**® footbed for greater comfort

Sizes: 4 - 14, 6½ - 12½



55-345Z

150MM BLACK ZIP SIDED BOOT

- Water resistant full grain leather
- Premium **COOLstep**® lining for optimum freshness
- **NANOlite**® footbed for greater comfort
- Convenient quick release zipper

Sizes: 4 - 16, 6½ - 12½ **NEW EXTENDED SIZE**



55-385 200MM HI-LEG WHEAT ZIP SIDED BOOT

- Water resistant nubuck leather
- Premium **COOLstep**® lining for optimum freshness
- **NANOlite**® footbed for greater comfort
- Convenient quick release zipper

Sizes: 4 - 14, 6½ - 12½



55-380 200MM HI-LEG BLACK ZIP SIDED BOOT

- Water resistant full grain leather
- Premium **COOLstep**® lining for optimum freshness
- **NANOlite**® footbed for greater comfort
- Convenient quick release zipper

Sizes: 4 - 14, 6½ - 12½



COMFORT GUARANTEE!

† Must produce dated receipt and guarantee tag

Try a pair of correctly fitted Oliver AT55 Boots for 30 days and, if you are not completely satisfied, return them to the specialist dealer you bought them from for exchange or refund. †



COMPLIES WITH

AS 2210.3:2019
EN ISO 20345:2011
ASTM F2413-18

55

SERIES

COMFORT TECHNOLOGY



COMFORT cushion
Impact Absorption



NATUREform
wide profile Type 1 safety toe cap



Water Resistant
leather



Steel Safety
Toe Cap



Toe Bumper



NANOlite
footbed



Antimicrobial
Technology



SOFTstride
Contour Comfort Support



HEELguard

SOLING TECHNOLOGY



300°C
Heat Resistant sole (572° F)



Abrasion
Resistant sole



Cut Resistant
sole



Slip Resistant
sole



Sole resistant to
mineral oils and acids



Sole resistant to
organic oils and fats



Antistatic
discharges static build-up

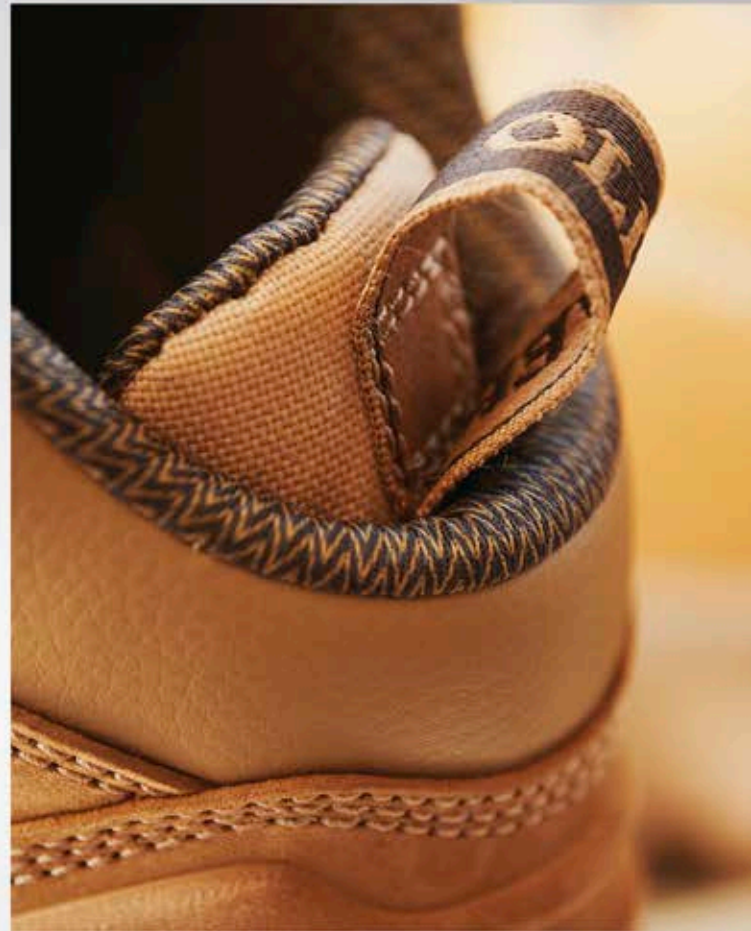


55-330Z 130MM WHEAT ZIP SIDED BOOT

- Water resistant nubuck leather
- Premium **COOLstep**® lining for optimum freshness
- **NANOlite**® footbed for greater comfort
- Snug Fit Heal Contour System
- Convenient quick release zipper

Sizes: 4 - 14, 6½ - 12½


EXTRA FEATURES:
 **SNUG FIT HEEL CONTOUR SYSTEM**



55-340Z 130MM BLACK ZIP SIDED BOOT

- Water resistant full grain leather
- Premium **COOLstep**® lining for optimum freshness
- **NANOlite**® footbed for greater comfort
- Snug Fit Heal Contour System
- Convenient quick release zipper

Sizes: 4 - 14, 6½ - 12½


EXTRA FEATURES:
 **SNUG FIT HEEL CONTOUR SYSTEM**



55-350Z 130MM STONE ZIP SIDED BOOT

- Water resistant nubuck leather
- Premium **COOLstep**® lining for optimum freshness
- **NANOlite**® footbed for greater comfort
- Snug Fit Heal Contour System
- Convenient quick release zipper

Sizes: 4 - 14, 6½ - 12½

EXTRA FEATURES:
 **SNUG FIT HEEL CONTOUR SYSTEM**

55

SERIES

PENETRATION RESISTANT
METATARSAL DUAL DENSITY
PU / RUBBER FOOTWEAR



55-346 150MM BLACK LACE UP BOOT

- Water resistant full grain leather
- Premium **COOLstep**® lining for optimum freshness
- **NANOlite**® footbed for greater comfort
- **PORON**® XRD™ Metatarsal Guard
- **Q-flex**® non-metallic penetration protection insole

Sizes: 4 - 14, 6½ - 12½



55-336 150MM WHEAT LACE UP BOOT

- Water resistant nubuck leather
- Premium **COOLstep**® lining for optimum freshness
- **NANOlite**® footbed for greater comfort
- **PORON**® XRD™ Metatarsal Guard
- **Q-flex**® non-metallic penetration protection insole

Sizes: 4 - 14, 6½ - 12½

COMPLIES WITH



AS 2210.3:2019
EN ISO 20345:2011
ASTM F2413-18



Oliver **SOFTstride**® Comfort System works to soften and absorb the impact on the foot stride after stride. A layer of open cell low density urethane foam built into the insole contours to the individual foot shape to provide ultimate comfort and support. The unique Oliver **SOFTstride**® gives added reassurance to help you get through those long hours on your feet.



Oliver **COOLstep**® lining to absorb moisture and odour for optimum freshness and hygiene.

55 SERIES METATARSAL COMFORT & SOLING TECHNOLOGY

METATARSAL RANGE
EXTRA
FEATURES:



PORON® XRD™ Metatarsal Guard - Extreme Impact Protection.

PORON® XRD™ is not only comfortable, flexible and lightweight but frees you of rigid, bulky and constricting padding. On impact, the **PORON**® XRD™ high performance molecules create a unique protective shield that absorbs up to 90% of the most intense force* - hit after hit.

*as measured according to ASTM-F1614-C
PORON® and **XRD**™ are licensed trademarks of Rogers Corporation



PORON® XRD™ REVOLUTIONARY METATARSAL PROTECTION



NANOlite® Technology

The Oliver Comfort System now has a unique **NANOlite**® footbed for greater comfort and well-being. The gently raised surface of the sole massages your feet as you walk, promoting greater blood flow to help reduce fatigue. Plus, a perforated foam air control layer enhances air circulation, reducing odour.

COMFORTcushion® Impact Absorption System

Oliver's unique **COMFORTcushion**® uses a combination of cellular urethane and **PORON**® performance cushioning to protect the heel and ball of the foot, providing superior cushioning and shock absorption at the heel. This constant impact absorption helps reduce foot, leg and lower back fatigue.

NATUREform® Type 1 Toe Cap

Oliver **NATUREform**® toe caps have a wide profile shape to suit your foot and are padded with a latex cushion liner to ensure toes are comfortable and not in contact with the cap. Oliver boots with **NATUREform**® caps are licensed to the Australian Standard AS 2210.3.



COMFORT GUARANTEE †

† Must produce dated receipt and guarantee tag

AT's All Terrain Dual Density PU/ Rubber Soling technology

The AT's Dual Density PU / Rubber Soling Technology combines a soft shock absorbing low density PU midsole with a high density hard wearing nitrile rubber outsole. The long wearing All Terrain rubber outsole is designed for superior grip and durability.

AT's Rubber soling technology offers:

- Heat resistant outsole to temperatures of 300° Celsius.
- Electrical Hazard (EH) Protection. Reduces danger of accidental contact with live electrical circuits in accordance with ASTM F2413-18
- Resistant to mineral oils, acids, alkalies, animal fats and oils.
- Superior resistance to abrasion and cutting.
- Excellent slip resistance, rated SRC.

65

SERIES

WATERPROOF MINING/CAUSTIC RESISTANT FOOTWEAR



COMPLIES WITH ✓
 AS 2210.3:2019
 EN ISO 20345:2011
 ASTM F2413-18

65-791 350MM BLACK LACE UP MINING BOOT

- 100% waterproof premium full grain leather
- New **Y-Guard** TPU ankle protectors provides impact resistance
- Flush, integrated zip contours to the boot
- Heavy Duty KEVLAR®¹ stitching on critical wear seams
- Internal **PORON® XRD** metatarsal guard
- **Q-flex®** non metallic penetration protection insole
- Reflective panel above the heel increases visibility

Sizes: 4 - 16, 6½ - 12½



REPLACEMENT ZIP CODE: ZIP791

EXTRA FEATURES:



EXTRA FEATURES:



65-493 240MM BROWN PULL ON RIGGERS BOOT

- 100% waterproof premium full grain leather
- Heavy duty coated leather for ultimate durability
- Internal **PORON® XRD** metatarsal guard
- **Q-flex®** non metallic penetration protection insole

Sizes: 4 - 16, 6½ - 12½



EXTRA FEATURES:



65-490 150MM BROWN LACE UP BOOT

- 100% waterproof CORDURA® and full grain leather
- High abrasion and chemical resistance
- New and improved **SAFETYcell®**
- **Q-flex®** non metallic penetration protection insole
- Free running, quick-adjust lacing system

Sizes: 4 - 16, 6½ - 12½

SOLING TECHNOLOGY



- 300°C**
Heat Resistant sole (572° F)
- Abrasion Resistant sole**
- Cut Resistant sole**
- Slip Resistant sole**
- Sole resistant to mineral oils and acids**
- Sole resistant to organic oils and fats**



EXTRA FEATURES:



65-490Z 150MM BROWN ZIP SIDED BOOT

- 100% waterproof premium full grain leather
- Heavy duty coated leather for ultimate durability
- High abrasion and chemical resistance
- New and improved **SAFETYcell®**
- **Q-flex®** non metallic penetration protection insole
- Convenient quick release zipper

Sizes: 4 - 16, 6½ - 12½

65 SERIES COMFORT TECHNOLOGY

- COMFORTcushion** Impact Absorption
- NANOlite** footbed
- NATUREform** wide profile Type 1 safety toe cap
- Steel Safety Toe Cap**
- Water Resistant leather**
- SAFETYcell** protection
- Sole Penetration Protection**

OLIVER 30 DAY COMFORT GUARANTEE!

† Must produce dated receipt and guarantee tag



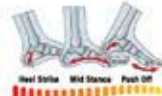
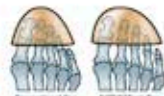
NANOlite® Technology

Improved **NANOlite®** footbed features moisture wicking characteristics and improved softer materials which provide additional cushioning and comfort. Increased perforations enable better breathability and the 3-layer structure promotes lower leg circulation reducing worker fatigue.



NATUREform® Type 1 Toe Cap

Oliver **NATUREform®** toe caps have a wide profile shape to suit your foot and are padded with a latex cushion liner to ensure toes are comfortable and not in contact with the cap. Oliver boots with **NATUREform®** caps are licensed to the Australian Standard AS 2210.3.



COMFORTcushion® Impact Absorption System

Oliver's unique **COMFORTcushion®** uses a combination of cellular urethane and **PORON®** performance cushioning to protect the heel and ball of the foot, providing superior cushioning and shock absorption at the heel. This constant impact absorption helps reduce foot, leg and lower back fatigue.



PORON® XRD™ Metatarsal Guard

PORON® XRD is not only comfortable, flexible and lightweight but frees you of rigid, bulky and constricting padding. On impact, the **PORON® XRD** high performance molecules create a unique protective shield that absorbs up to 90% of the most intense force* - hit after hit.

*as measured according to ASTM-F1614-C



by Honeywell

**LOVE
YOUR FEET
MORE.**



A PROUD TRADITION - FOUNDED 1887

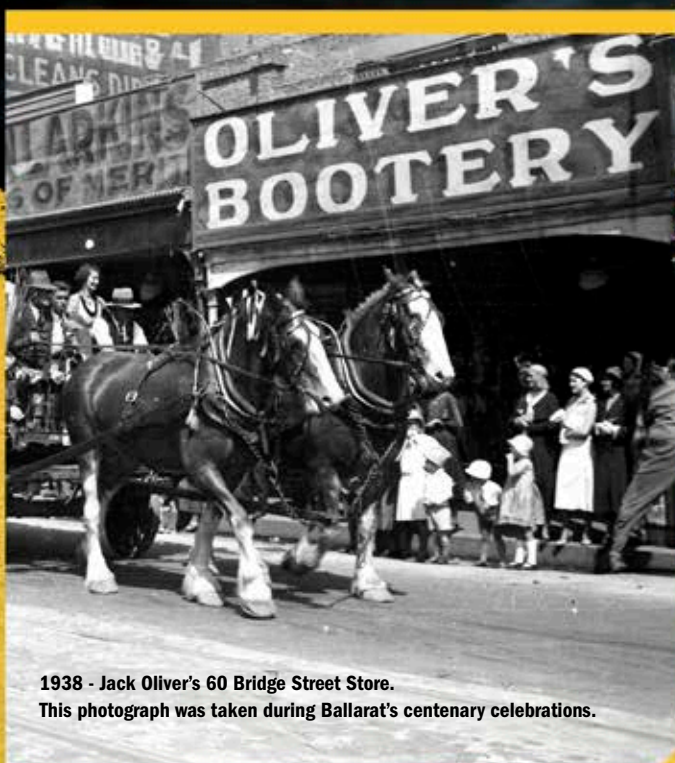
Oliver Footwear, Australia's leading safety footwear manufacturer owes its origins to gold mining in the Victorian provincial city of Ballarat.

Our founder James Oliver, a boot-maker by trade, came to the goldfields of Ballarat, then amongst the richest alluvial and underground mining fields in the world, in the mid 1800's. His quest for the elusive nuggets was unsuccessful, so he returned to the trade of boot-making which he had learned in the U.K.

Established as the business of Oliver & Stevens, the new venture commenced producing tough and durable boots for miners and farmers in 1887.

The same entrepreneurial streak which marked the establishment of the business in 1887 continues today with Oliver Footwear building on its commitment to footwear product design in Victoria, Australia.

Product research and development to address the needs and demands of tough workplace safety environments will always be a central part of our company philosophy.



1938 - Jack Oliver's 60 Bridge Street Store.
This photograph was taken during Ballarat's centenary celebrations.



Ongoing investment in manufacturing technology, business systems and people ensures that Oliver Footwear continues to adopt the world's best practices across all aspects of the business. Oliver Footwear is now part of Honeywell Personal Protective Equipment, a global manufacturer of personal protective solutions with over 100 years of safety innovation, offering the most comprehensive range of head-to-toe solutions.

22 SERIES

PVC SAFETY GUMBOOT



22-205
GREY SAFETY GUMBOOT

- Waterproof PVC gumboot
 - **STEELflex**® steel midsole penetration protection
 - **METprotect**® Metatarsal protection
 - Kick off spur
 - Two trim heights
- Sizes: 5 - 13

✓ **COMPLIES WITH** AS 2210.3:2019
EN ISO 20345:2011
ASTM F2413-18

SOLING TECHNOLOGY

| | | | |
|--|---|---------------------------------|---------------------------------|
| 130°C Heat Resistant sole (266° F) | Abrasion Resistant sole | Cut Resistant sole | Slip Resistant sole |
| Sole resistant to mineral oils and acids | Sole resistant to organic oils and fats | Electrical Hazard Resistant | Sole penetration protection |

22 Series PVC / Nitrile Soling Technology

The WB 22 series sole consists of a hard wearing heavy duty PVC / Nitrile sole that offers extra deep tread for greater stability and grip on uneven and loose surfaces.

WB's 22 Series PVC / Nitrile soling technology features:

- Heat resistant to temperatures of 130° Celsius.
- Excellent slip resistance, rated SRC.
- Resistant to solvents, mild acids, alkalis, some chemicals, oils and fats.
- Will not mark floors.
- Electrical Hazard (EH) Protection. Reduces danger of accidental contact with live electrical circuits in accordance with ASTM F2413-18.

22 SERIES **COMFORT TECHNOLOGY**

| | | | | | | |
|---------------------------------------|---|--------------------------|-------------------------|-----------------------------------|----------------------|---------------------------|
| COMFORT cushion Impact Absorption | NATUREform wide profile Type 1 safety toe cap | Steel Safety Toe Cap | Waterproof footwear | Hi-Vis Reflective Safety Trim | NANOlite footbed | Metatarsal Protection |
|---------------------------------------|---|--------------------------|-------------------------|-----------------------------------|----------------------|---------------------------|



NANOlite® Technology

The Oliver Comfort System now has a unique **NANOlite**® footbed for greater comfort and well-being. The gently raised surface of the sole massages your feet as you walk, promoting greater blood flow to help reduce fatigue. Plus, a perforated foam air control layer enhances air circulation, reducing odour.

NATUREform® Type 1 Toe Cap

Oliver **NATUREform**® toe caps have a wide profile shape to suit your foot and ensure toes are comfortable and not in contact with the cap. Oliver boots with **NATUREform**® caps are licensed to the Australian Standard AS 2210.3.

METprotect® Metatarsal Protection

Oliver patented **METprotect**® metatarsal protection offers revolutionary inbuilt design technology to protect the impact strike zone. The enhanced design offers comfort and flexibility not afforded by traditional metatarsal protection materials.

STEELflex® Protection System.

Steel midsole protection reduces the risk of sharp objects penetrating the sole and entering the foot. A thin protective shield is inserted in the midsole providing safety while retaining comfort and flexibility of the sole. Meets requirements of Australian Standard AS 2210.3.

24 SERIES THERMAL PU SAFETY GUMBOOT



COMPLIES WITH



AS 2210.3:2019
EN ISO 20345:2011
ASTM F2413-18

SOLING TECHNOLOGY



Heat Resistant sole (266° F)



Abrasion Resistant sole



Cut Resistant sole



Slip Resistant sole



Sole resistant to mineral oils and acids



Sole resistant to organic oils and fats



Antistatic discharges static build-up



Sole Penetration Protection

The WB 24 Series soling technology features:

- Heat resistant to temperatures of 130° Celcius.
- Excellent slip resistance, rated SRC.
- Sole resistant to solvents, mild acids, alkalis, some chemicals, oils and fats.
- Superior cut, split and crack resistant sole.
- Antistatic protection discharges static build-up

24-205

GREEN SAFETY PU GUMBOOT

NEW RELEASE

- Waterproof thermal PU gumboot
- Hydrolysis protection and anti-UV additives
- **NATUREform**® safety steel toe cap
- **STEELflex**® steel midsole penetration protection
- **METprotect**® metatarsal protection
- Lasts 3 to 4 times longer than traditional PVC and rubber boots
- Anti-bacterial sock

Sizes: 5 - 13 / 38-48

24-210

WHITE SAFETY PU GUMBOOT

NEW RELEASE

- Waterproof thermal PU gumboot
- Hydrolysis protection and anti-UV additives
- **NATUREform**® safety steel toe cap
- **STEELflex**® steel midsole penetration protection
- **METprotect**® metatarsal protection
- Lasts 3 to 4 times longer than traditional PVC and rubber boots
- Anti-bacterial sock

Sizes: 5 - 13 / 38-48

24 SERIES COMFORT TECHNOLOGY



COMFORTcushion Impact Absorption



NATUREform wide profile Type 1 Safety steel toe cap



Steel Safety Toe Cap



Metatarsal protection



Waterproof footwear



COMFORTcushion® Impact Absorption System

COMFORTcushion® uses a combination of cellular urethane and **PORON**® performance cushioning to protect the heel and ball of the foot by providing superior cushioning and shock absorption... reducing foot, leg, and lower back fatigue.



NATUREform® Type 1 Toe Cap

Oliver **NATUREform**® toe caps have a wide profile shape to suit your foot and ensure toes are comfortable and not in contact with the cap. Oliver boots with **NATUREform**® caps are licensed to the Australian Standard AS 2210.3.



METprotect® Metatarsal Protection

Oliver patented **METprotect**® metatarsal protection offers revolutionary inbuilt design technology to protect the impact strike zone. The enhanced design offers comfort and flexibility not afforded by traditional metatarsal protection materials.



STEELflex® Protection System.

Steel midsole protection reduces the risk of sharp objects penetrating the sole and entering the foot. A thin protective shield is inserted in the midsole providing safety while retaining comfort and flexibility of the sole. Meets requirements of Australian Standard AS 2210.3.

26 SERIES

**NON SAFETY
FOOTWEAR**



Tread pattern designed for excellent slip resistance

GRIPthane® tread pattern for greater traction and heat resistant to 130°C

Non-woven moisture wicking lining

Flexible EVA toe form

Water Resistant Upper

COMFORTcushion® Impact Absorption System uses a combination of cellular urethane and PORON®

Oliver Comfort Footbed enhances natural air flow; infused with Odorban™ Control Technology.

Shock absorbing Polyurethane midsole

| | |
|----------------------|---|
| COMPLIES WITH | ✓ |
| AS 2210.5:2019 | |
| EN ISO 20347:2012 | |
| ASTM F2892-18 | |



26-660 140MM BLACK ZIP SIDED BOOT

- Water resistant full grain leather
- Full lining and comfort footbed infused with **Odorban™** Control Technology
- Convenient side zip
- Sizes: 4 - 13, 6½ - 10½



26-620 BLACK ELASTIC SIDED BOOT

- Water resistant full grain leather
- Comfort foot bed infused with **Odorban™** Control Technology
- Sizes: 4 - 13, 6½ - 10½

26 SERIES **COMFORT TECHNOLOGY**



COMFORTcushion Impact Absorption



Water Resistant Leather



Antimicrobial Technology



HYDROstop® PROTECTION

HYDROstop® offers a 3 year guarantee against the effects of hydrolysis and microbiotic attack on the sole.

SOLING TECHNOLOGY



HYDROstop 3 year guarantee against hydrolysis



130°C Heat Resistant sole (266° F)



Abrasion Resistant sole



Cut Resistant sole



Slip Resistant sole



Sole resistant to mineral oils and acids



Sole resistant to organic oils and fats



Electrical Hazard Resistant

COMFORTcushion® Impact Absorption System

COMFORTcushion® uses a combination of cellular urethane and PORON® to protect the heel and ball of the foot by providing superior cushioning and shock absorption, reducing foot, leg, and lower back fatigue.

Odorban™ Control Technology

The Oliver Comfort System footbed now includes **Odorban™** Control Technology for greater comfort. This anti microbial solution controls the bacteria that cause odour, stains and product deterioration. The new comfort footbed also has perforated air channels to promote natural airflow to the feet and help maintain freshness.

GRIPthane® Dual Density Polyurethane sole

- Lightweight shock absorbing low density PU midsole extends deep into the cleat which not only assist with surface grip, but also provides cushioning to absorb the shock of rough surfaces.
- Hard wearing PU outsole is designed for superior grip and durability
- Heat resistant outsole to temperatures of 130° Celsius
- Electrical Hazard (EH) Protection reduces danger of accidental contact with live electrical circuits in accordance with ASTM F2413-18
- Resistant to mineral and organic oils and acids
- Superior resistance to abrasion and cutting
- Excellent slip resistance, rated SRC

34 SERIES | DUAL DENSITY PU FOOTWEAR



COMPLIES WITH

AS 2210.3:2019
EN ISO 20345:2011
ASTM F2413-2018



34 SERIES COMFORT TECHNOLOGY



COMFORTcushion® Impact Absorption System

COMFORTcushion® uses a combination of cellular urethane and **PORON®** performance cushioning to protect the heel and ball of the foot by providing superior cushioning and shock absorption...reducing foot, leg, and lower back fatigue.



Odorban™ Control Technology

The Oliver Comfort System footbed now includes **Odorban™** Control Technology for greater comfort. This anti microbial solution controls the bacteria that cause odour, stains and product deterioration. The new comfort footbed also has perforated air channels to promote natural airflow to the feet and help maintain freshness.



NATUREform® Type 1 Toe Cap

Oliver **NATUREform®** toe caps have a wide profile shape to suit your foot and are padded with a latex cushion liner to ensure toes are comfortable and not in contact with the cap. Oliver boots with **NATUREform®** caps are licensed to the Australian Standard AS 2210.3.



34-660

BLACK ZIP SIDED ANKLE BOOT

- Water resistant full grain leather
- Full lining and comfort footbed infused with **Odorban™** Control Technology
- Convenient side zip
- Toe bumper to protect against scuffing

Sizes: 4 - 13, 6½ - 10½

EXTRA FEATURES:



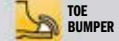
34-662

WHEAT ZIP SIDED ANKLE BOOT

- Water resistant nubuck leather
- Full lining and comfort footbed infused with **Odorban™** Control Technology
- Convenient side zip
- Toe bumper to protect against scuffing

Sizes: 4 - 13, 6½ - 10½

EXTRA FEATURES:



34-632

WHEAT LACE UP ANKLE BOOT

- Water resistant nubuck leather
- Full lining and comfort footbed infused with **Odorban™** Control Technology

Sizes: 4 - 13, 6½ - 10½



HYDROstop® PROTECTION

HYDROstop® offers a 3 year guarantee from date of manufacture against the effects of hydrolysis and microbiotic attack on the sole.



SOLING TECHNOLOGY



HYDROstop
3 year guarantee
against hydrolysis



130°C
Heat Resistant
sole (266° F)



Abrasion
Resistant sole



Cut Resistant
sole



Slip Resistant
sole



Sole resistant to
mineral oils
and acids



Sole resistant to
organic oils
and fats



Electrical Hazard
Resistant

GRIPthane® Dual Density Polyurethane sole

- Lightweight shock absorbing low density PU midsole extends deep into the cleat which not only assist with surface grip, but also provides cushioning to absorb the shock of rough surfaces.
- Hard wearing PU outsole is designed for superior grip and durability
- Heat resistant outsole to temperatures of 130° Celsius
- Electrical Hazard (EH) Protection reduces danger of accidental contact with live electrical circuits in accordance with ASTM F2413-18
- Resistant to mineral and organic oils and acids
- Superior resistance to abrasion and cutting
- Excellent slip resistance, rated SRC

34 SERIES | DUAL DENSITY PU FOOTWEAR



COMPLIES WITH ✓
 AS 2210.3:2019
 EN ISO 20345:2011
 ASTM F2413-18



34-692
250MM BROWN PULL ON RIGGERS BOOT

- Water resistant pull up leather
 - Full lining and comfort footbed infused with **Odorban™** Control Technology
 - Toe bumper to protect against scuffing
- Sizes:** 4 - 13, 6½ - 10½

EXTRA FEATURES:
TOE BUMPER



34-626
CLARET ELASTIC SIDED BOOT

- Water resistant full grain leather
 - Comfort footbed infused with **Odorban™** Control Technology
- Sizes:** 4 - 13, 6½ - 10½



34-620
BLACK ELASTIC SIDED BOOT

- Water resistant full grain leather
 - Comfort footbed infused with **Odorban™** Control Technology
- Sizes:** 4 - 13, 6½ - 10½



34-624
BEIGE ELASTIC SIDED BOOT

- Water resistant suede leather
 - Comfort footbed infused with **Odorban™** Control Technology
- Sizes:** 4 - 13, 6½ - 10½



34-623
BLACK LACE UP ANKLE JOGGER

- Water resistant suede leather
 - Full lining and comfort footbed infused with **Odorban™** Control Technology
- Sizes:** 4 - 13, 6½ - 10½

34 SERIES COMFORT TECHNOLOGY



COMFORT cushion
 Impact Absorption



NATUREform
 wide profile Type 1 safety toe cap



Steel Safety
 Toe Cap



Water Resistant
 leather



Antimicrobial
 Technology

SOLING TECHNOLOGY



HYDROstop
 3 year guarantee against hydrolysis



130°C
 Heat Resistant sole (266° F)



Abrasion
 Resistant sole



Cut Resistant
 sole



Slip Resistant
 sole



Sole resistant to
 mineral oils and acids



Sole resistant to
 organic oils and fats



Electrical Hazard
 Resistant



HYDROstop® PROTECTION

HYDROstop® offers a 3 year guarantee from date of manufacture against the effects of hydrolysis and microbiotic attack on the sole.



34-652

BLACK LACE UP DERBY SHOE

- Water resistant smooth full grain leather
- Full lining and comfort footbed infused with **Odorban™** Control Technology

Sizes: 4 - 13, 6½ - 10½



34-615

WHEAT SLIP ON SPORTS SHOE

- Water resistant nubuck leather with **EXPANDflex®** for easy donning and doffing
- Full lining and comfort footbed infused with **Odorban™** Control Technology

Sizes: 4 - 13, 6½ - 10½



34-610

BLACK SLIP ON SPORTS SHOE

- Water resistant nubuck leather with **EXPANDflex®** for easy donning and doffing
- Full lining and comfort footbed infused with **Odorban™** Control Technology

Sizes: 4 - 13, 6½ - 10½

40 SERIES ACTIVE RANGE EVA MIDSOLE / RUBBER OUTSOLE



COMPLIES WITH AS/NZS 2210.3:2019
EN ISO 20345:2011



PREDICTIVE WEAR FEATURE:
The patented wear off indicators help identify when replacement is due.

Electrostatic discharge (ESD) protection.

Flexible textile and bonded TPU film upper for greater abrasion protection.

3D Mesh lining provides great breathability for all day freshness.

HEELguard® for added stability.

Breathable textured material with anti-bacterial properties.

Shock Absorber footbed comfort system to protect heel and ball of foot.

Qflex® non metallic penetration protection insole.

Protection strip.



NATUREform®
high impact
composite toe cap

40% LIGHTER

Application:
Transport & Logistics / Manufacturing / Storage & Warehousing /
Building & Construction / Light Industry / Security

Flexible EVA midsole and 300°C HRO heat resistant rubber outsole.

Open cell low density urethane foam for comfort and contour support.

40 SERIES COMFORT TECHNOLOGY



COMFORT cushion
Impact
Absorption



NATUREform
wide profile Type
1 safety toe cap



Midsole
penetration
protection



Non-Metallic
Composite
Toecap



Antimicrobial
Technology



HEELguard



Shock Absorber Footbed

Oliver's Shock Absorber Footbed is breathable, anti-bacterial and supports the heel and ball of the foot with uncompromising comfort. Superior cushioning provides absolute shock absorption to reduce the impact of each step on the body.



Electrostatic Discharge (ESD) Protection

Specially built into footwear to limit build-up of electrostatic charges to protect wearers from damaging sensitive electronic equipment or igniting flammable materials.



Predictive Wear Feature

Patented wear-off indicators added to the sole provides an early warning on sole wear and potential loss of grip, aiding in timely identification when replacement is due.



Non Metallic Composite Toe Cap Technology

Oliver has pioneered a new innovative Hi-Impact Non-Metallic Composite type 1 toe cap which is more than 40% lighter than traditional steel toe caps and still exceeds the Australian Standard AS 2210.3.



NEW RELEASE

40-805
BLACK FLYKNIT SHOE
(S1P HRO SRC ESD)

- Breathable textile and knitted upper materials
 - **NATUREform**® high impact composite safety toe cap
 - **Q-flex**® non-metallic penetration protection insole
 - Electrostatic discharge (ESD) protection
 - Convenient lace fix system for those on the go
- Sizes: 5 - 14, 6½ - 10½



NEW RELEASE

40-815
BLACK JOGGER SHOE
(S3 HRO SRC ESD)

EXTRA FEATURES:
 WATER RESISTANT

- Abrasion resistant flexible textile and bonded thermoplastic polyurethane (TPU) film upper
 - **NATUREform**® high impact composite safety toe cap
 - **Q-flex**® non metallic penetration protection insole
 - Electrostatic discharge (ESD) protection
- Sizes: 5 - 14, 6½ - 10½



NEW RELEASE

40-825
BLACK JOGGER ANKLE BOOT
(S3 HRO SRC ESD)

EXTRA FEATURES:
 WATER RESISTANT

- Abrasion resistant flexible textile and bonded thermoplastic polyurethane (TPU) film upper
 - **NATUREform**® high impact composite safety toe cap
 - **Q-flex**® non metallic penetration protection insole
 - Electrostatic discharge (ESD) protection
- Sizes: 5 - 14, 6½ - 10½



40-800
GREY FLYKNIT SHOE
(S1P HRO SRC ESD)

- Breathable textile and knitted upper materials
 - **NATUREform**® high impact composite safety toe cap
 - **Q-flex**® non-metallic penetration protection insole
 - Electrostatic discharge (ESD) protection
 - Convenient lace fix system for those on the go
- Sizes: 5 - 14, 6½ - 10½



40-810
GREY JOGGER SHOE
(S3 HRO SRC ESD)

EXTRA FEATURES:
 WATER RESISTANT

- Abrasion resistant flexible textile and bonded thermoplastic polyurethane (TPU) film upper
 - **NATUREform**® high impact composite safety toe cap
 - **Q-flex**® non metallic penetration protection insole
 - Electrostatic discharge (ESD) protection
- Sizes: 5 - 14, 6½ - 10½



40-820
GREY JOGGER ANKLE BOOT
(S3 HRO SRC ESD)

EXTRA FEATURES:
 WATER RESISTANT

- Abrasion resistant flexible textile and bonded thermoplastic polyurethane (TPU) film upper
 - **NATUREform**® high impact composite safety toe cap
 - **Q-flex**® non metallic penetration protection insole
 - Electrostatic discharge (ESD) protection
- Sizes: 5 - 14, 6½ - 10½



COMFORT GUARANTEE†

† Must produce dated receipt and guarantee tag

Try a pair of correctly fitted Oliver ST40 Boots for 30 days and, if you are not completely satisfied, return them to the specialist dealer you bought them from for exchange or refund. †



SOLING TECHNOLOGY



ST's EVA/Rubber Soling Technology

- Lightweight, shock absorbing low density EVA midsole which cushions the foot on impact to provide unmatched comfort and help reduce foot, leg and lower back fatigue.
- Hard wearing rubber outsole provides superior grip and abrasion resistance.
- Heat resistant outsole to temperatures of 300° Celsius.
- Electrostatic discharge protection (ESD) to protect wearers from damaging sensitive electronic equipment or igniting flammable materials.
- Resistant to most oils, acids and chemicals.
- Superior resistance to abrasion, splitting and cracking.
- Excellent slip resistance, rated SRC
- Will not mark floors.

49

SERIES

LADIES DUAL DENSITY PU / RUBBER FOOTWEAR



COMPLIES WITH

AS 2210.3:2019
EN ISO 20345:2011
ASTM F2413-18



49 SERIES COMFORT TECHNOLOGY



COMFORTcushion
Impact Absorption



NATUREform
wide profile Type 1 safety toe cap



Steel Safety
Toe Cap



Water Resistant
leather



Antimicrobial
Technology



SOFTstride
Contour Comfort Support

¹ PORON© 2013 Rogers Corporation. All Rights Reserved



COMFORTcushion® Impact Absorption System

COMFORTcushion® uses a combination of cellular urethane and PORON® performance cushioning to protect the heel and ball of the foot by providing superior cushioning and shock absorption...reducing foot, leg, and lower back fatigue.

¹ © Devan Chemicals NV 2015



Odorban™ Control Technology

The Oliver Comfort System footbed now includes Odorban¹ Control Technology for greater comfort. This anti microbial solution controls the bacteria that cause odour, stains and product deterioration. The new comfort footbed also has perforated air channels to promote natural airflow to the feet and help maintain freshness.



NATUREform® Type 1 Toe Cap

Oliver NATUREform® toe caps have a wide profile shape to suit your foot and are padded with a latex cushion liner to ensure toes are comfortable and not in contact with the cap. Oliver boots with NATUREform® caps are licensed to the Australian Standard AS 2210.3.



Oliver SOFTstride® Comfort System

Oliver SOFTstride® Comfort System works to soften and absorb the impact on the foot stride after stride. A layer of open cell low density urethane foam built into the insole contours to the individual foot shape to provide ultimate comfort and support. The unique Oliver SOFTstride® gives added reassurance to help you get through those long hours on your feet.

PB49 SERIES



49-445Z

BLACK ZIP SIDED BOOT

- Water resistant full grain leather
- Premium **COOLstep**® lining for optimum freshness
- Convenient side zip

Metric sizes: 35 - 43

EXTRA FEATURES:



BONUS LACES
COLOUR MATCHED LACES
INCLUDED IN BOX



49-432Z

WHEAT ZIP SIDED BOOT

- Water resistant nubuck leather
- Premium **COOLstep**® lining for optimum freshness
- Convenient side zip

Metric sizes: 35 - 43

EXTRA FEATURES:



BONUS LACES
COLOUR MATCHED LACES
INCLUDED IN BOX



**NEW
RELEASE**

49-450Z

STONE ZIP SIDED LOW-CUT BOOT

- Water resistant nubuck leather
- Premium **COOLstep**® lining for optimum freshness
- Convenient side zip

Metric sizes: 35 - 43

EXTRA FEATURES:



BONUS LACES
COLOUR MATCHED LACES
INCLUDED IN BOX



49-430

BLACK SLIP ON SHOE

- Water resistant full grain leather
- Premium **COOLstep**® lining for optimum freshness

Metric sizes: 35 - 43

LADIES SIZE CONVERSION CHART*

| METRIC | 35 | 36 | 37 | 38 | 39 | 40 | 41 | 42 | 43 | | | |
|---------------|----|----|----|----|----|----|----|----|----|----|-----|----|
| UK/AUST WOMEN | 5 | 6 | 6½ | 7 | 7½ | 8 | 8½ | 9 | 9½ | 10 | 10½ | 11 |

* Chart is to be used as a guide only

* When ordering ladies styles only quote METRIC sizes



COMFORT GUARANTEE†

† Must produce dated receipt and guarantee tag

Try a pair of correctly fitted Oliver PB49 Boots for 30 days and, if you are not completely satisfied, return them to the specialist dealer you bought them from for exchange or refund. †



SOLING TECHNOLOGY



300°C
Heat Resistant sole (572° F)



Abrasion Resistant sole



Cut Resistant sole



Slip Resistant sole



Sole resistant to mineral oils and acids



Sole resistant to organic oils and fats



Antistatic discharges static build-up

PB's Dual Density PU/Rubber Soling Technology

- Lightweight, shock absorbing low density PU (Polyurethane) midsole which cushions the foot on impact to provide unmatched comfort and help reduce foot, leg and lower back fatigue.
- Long wearing PB nitrile rubber outsole is designed for superior grip and durability.
- Heat resistant outsole to temperatures of 300° Celsius.
- Anti Static minimises the build up of electrostatic activity and provides protection against the risk of spark ignition hazards including flammable materials and gases.
- Resistant to mineral oils, acids, alkalis, animal fats and oils.
- Superior resistance to abrasion and cutting.
- Excellent slip resistance, rated SRC.

38 SERIES | DUAL DENSITY PU EXECUTIVE FOOTWEAR



COMPLIES WITH

AS 2210.3:2019
EN ISO 20345:2011
ASTM F2413-18



¹ PORON® 2013 Rogers Corporation. All Rights Reserved
² © Devan Chemicals NV 2015



38-275
BLACK LACE UP DERBY SHOE

- Water resistant soft touch leather
- Premium leather lining

Sizes: 6- 13, 6 ½ - 10 ½



38-265
BLACK ZIP SIDE BOOT

- Water resistant soft touch leather
- Premium leather lining

Sizes: 6- 13, 6 ½ - 10 ½



38-250
BLACK ELASTIC SIDED BOOT

- Water resistant soft touch leather
- Premium leather lining

Sizes: 6- 13, 6 ½ - 10 ½

COMFORT TECHNOLOGY

| | | | | |
|----------------------------------|---|----------------------|-------------------------|------------------------------------|
| | | | | |
| COMFORTcushion Impact Absorption | NATUREform wide profile Type 1 safety toe cap | Steel Safety Toe Cap | Water Resistant leather | SOFTstride Contour Comfort Support |

SOLING TECHNOLOGY

| | | | | | | |
|------------------------------|-------------------------|--------------------|---------------------|--|---|---------------------------------------|
| | | | | | | |
| Heat Resistant sole (266° F) | Abrasion Resistant sole | Cut Resistant sole | Slip Resistant sole | Sole resistant to mineral oils and acids | Sole resistant to organic oils and fats | Antistatic discharges static build-up |

NATUREform® Type 1 Toe Cap

Oliver **NATUREform®** toe caps have a wide profile shape to suit your foot and are padded with a latex cushion liner to ensure toes are comfortable and not in contact with the cap. Oliver boots with **NATUREform®** caps are licensed to the Australian Standard AS 2210.3.

Oliver SOFTstride® Comfort System

Oliver **SOFTstride®** Comfort System works to soften and absorb the impact on the foot stride after stride. A layer of open cell low density urethane foam built into the insole contours to the individual foot shape to provide ultimate comfort and support. The unique Oliver **SOFTstride®** gives added reassurance to help you get through those long hours on your feet.

38 Series PB's Dual Density PU (Polyurethane) sole features:

- Heat resistant outsole to temperatures of 130° Celsius.
- Anti Static minimises the build up of electrostatic activity and provides protection against the risk of spark ignition hazards including flammable materials and gases.
- Resistant to most oils, acids and chemicals.
- Resistance to abrasion and cutting.
- Excellent slip resistance, rated SRC.

66 SERIES

STEEL/SMELTER/ CASTING INDUSTRY FOOTWEAR



COMPLIES WITH ✓
AS 2210.3:2019
EN ISO 20345:2011
ASTM F2413-18



EXTRA FEATURES:
SOLE PENETRATION PROTECTION

66-399 BLACK SMELTER BOOT WITH EXTERNAL METGUARD®

- Heat resistant and flame retardant leather
- **TECtuff®** toe bumper protection
- External rigid **METguard®** for added protection
- **Qflex®** non-metallic penetration protection insole
- Full leather lining

Sizes: 5 - 14, 6½ - 10½



66-398 BLACK SMELTER BOOT

- Heat resistant and flame retardant leather
- **TECtuff®** toe bumper protection
- Internal **PORON XRD™** metatarsal guard for added protection
- Fully lined with additional leather lining along the foot area for additional protection

Sizes: 5 - 14, 6½ - 10½

66 SERIES COMFORT TECHNOLOGY



SOLING TECHNOLOGY



COMFORTcushion® Impact Absorption System

COMFORTcushion® uses a combination of cellular urethane and PORON® performance cushioning to protect the heel and ball of the foot by providing superior cushioning and shock absorption... reducing foot, leg and lower back fatigue.

NATUREform® Type 1 Toe Cap

Oliver NATUREform® toe caps have a wide profile shape to suit your foot and are padded with a latex cushion liner to ensure toes are comfortable and not in contact with the cap. Oliver boots with NATUREform® caps are licensed to the Australian Standard AS 2210.3.

66 Series HS Dual Density Soling Technology

The 66 Series HS features a Heavy-Duty Nitrile Rubber Soling System with an integrated comfort layer of urethane which cushions the foot on impact. This improvement has led to a 15% reduction in product weight, which provides greater flexibility for workers, reduced worker fatigue and downtime, plus increased productivity.

- Heat resistant outsole to temperatures of 300° Celsius.
- Electrical Hazard (EH) Protection. Reduces danger of accidental contact with live electrical circuits in accordance with ASTM F2413-18.
- Resistant to mineral oils, acids, alkalis, animal fats and oils.
- Superior resistance to abrasion and cutting.
- Excellent slip resistance, rated SRC.

66

SERIES

FIRE & EMERGENCY SERVICES FOOTWEAR



COMPLIES TO



AS/NZS 4821:2014
Type 2 Structural
Firefighting Footwear

66-496 300MM PULL ON STRUCTURAL FIREFIGHTER BOOT

- Water resistant and flame retardant leather
- **TECTuff**® toe bumper protection
- **SYMPATEX**® breathable waterproof liner and membrane
- Heavy duty **Nomex**® stitching
- **Qflex**® non-metallic midsole protection
- **PORON**® XRD™ flexible metatarsal protection

Sizes: 2-17, 2½ - 16½

EXTRA FEATURES:



ZIP495
(FOR 66-495)

COMPLIES TO



AS/NZS 4821:2014
Type 2 Structural
Firefighting Footwear

EXTRA FEATURES:



66-495

230MM LACE UP STRUCTURAL FIREFIGHTERS BOOT

- Water resistant and flame retardant leather
- **SYMPATEX**® breathable waterproof liner and membrane
- **PORON**® XRD™ Extreme ankle protection
- **Qflex**® non-metallic midsole penetration protection
- **TECTuff**® toe bumper protection
- Heavy duty red **Nomex**® stitching and flame proof laces
- Lace in quick release zipper attachment

Sizes: 2-17, 2½ - 16½



COMPLIES TO



AS/NZS 4821:2014
Type 1 Wildland Fire
Fighting Footwear

OPTIONAL LACE IN QUICK RELEASE
ZIPPER ATTACHMENT

ZIP460 (FOR 66-460)

66-460

180MM WILDLAND FIREFIGHTERS BOOT

- Water resistant and flame retardant leather
- **TECTuff**® toe bumper protection
- Heavy duty red **Nomex**® stitching and flame proof laces

Sizes: 3-15, 3½ - 15½

66 SERIES COMFORT TECHNOLOGY



COMFORTcushion
Impact
Absorption



NATUREform
wide profile Type
1 safety toe cap



Water Resistant
leather



Non-Metallic
Composite
Toe cap



Toe Bumper



NANOlife
footbed



Hi-Y's Reflective
Safety Trim

SOLING TECHNOLOGY



300°C
Heat Resistant
sole (572° F)



Abrasion
Resistant sole



Cut Resistant
sole



Slip Resistant
sole



Sole resistant to
mineral oils
and acids



Sole resistant to
organic oils
and fats



Electrical Hazard
Resistant

COMFORTcushion® Impact Absorption System

COMFORTcushion® uses a combination of cellular urethane and **PORON**® performance cushioning to protect the heel and ball of the foot by providing superior cushioning and shock absorption... reducing foot, leg and lower back fatigue.

NATUREform® Type 1 Toe Cap

Oliver **NATUREform**® toe caps have a wide profile shape to suit your foot and are padded with a latex cushion liner to ensure toes are comfortable and not in contact with the cap. Oliver boots with **NATUREform**® caps are licensed to the Australian Standard AS 2210.3.

Non Metallic Composite Toe Cap Technology

Oliver has pioneered a new innovative Hi-Impact Non-Metallic Composite type 1 toe cap which is more than 40% lighter than traditional steel toe caps and still exceeds the Australian Standard AS 2210.3.

66 Series HS Dual Density Soling Technology

The 66 Series HS features a Heavy-Duty Nitrile Rubber Soling System with an integrated comfort layer of urethane which cushions the foot on impact. This improvement has led to a 15% reduction in product weight, which provides greater flexibility for workers, reduced worker fatigue and downtime, plus increased productivity.

- Heat resistant outsole to temperatures of 300° Celsius.
- Electrical Hazard (EH) Protection. Reduces danger of accidental contact with live electrical circuits in accordance with ASTM F2413-18.
- Resistant to mineral oils, acids, alkalis, animal fats and oils.
- Superior resistance to abrasion and cutting.
- Excellent slip resistance, rated SRC.

ACCESSORIES



INSOL-N NANOLITE FOOTBED

NANOLite Impact Absorption System insole with PORON.
Sizes: 4-14



ZIP495

Replacement zip for style 66-495
18cm - sizes 2-6
19cm - sizes 7-10
20cm - sizes 11-17



ZIP791

Optional zip for style 65-791
26cm - sizes 4-7
28cm - sizes 8-10
30cm - sizes 11-16



ZIP460

Optional zip for style 66-460
15cm - sizes 3-6
16cm - sizes 7-10
17cm - sizes 11-15



**NEW
RELEASE**

SOCK-OL

BAMBOO WORK SOCKS

Ultra thick.
 Antibacterial.
One Size: 7-11

REPLACEMENT LACES

| LACE CODE | REPLACEMENT FOR: | SIZE | COLOUR |
|-----------|--|--------|-------------------|
| L-BL105 | 34-652, 44-500 | 105 cm | BLACK |
| L-BL125 | 26-660, 34-660 | 125 cm | BLACK |
| L-BU090 | 49-414 | 90 cm | BLUE |
| L-BS145 | 45-650Z, 55-350Z | 145 cm | BROWN / STONE |
| L-BU145 | 44-535 | 145 cm | BLUE |
| L-EX080 | 38-275 | 80 cm | BLACK - EXEC |
| L-FP160 | 66-460, 66-495 | 160 cm | FIREPROOF / BLACK |
| L-GB085 | 55-380 | 85 cm | GREY/ BLACK |
| L-GB125 | 26-636, 34-613, 34-634, 44-515, 49-445Z | 125 cm | GREY / BLACK |
| L-GB145 | 45-640Z, 55-340Z | 145 cm | GREY / BLACK |
| L-GB155 | 45-637, 45-640Z, 45-645, 45-645Z, 55-337, 55-340Z, 55-345, 55-345Z, 55-346, 65-490 | 155 cm | GREY / BLACK |
| L-GB175 | 34-623 | 175 cm | GREY / BLACK |
| L-GB250 | 65-791 | 250 cm | GREY / BLACK |
| L-G0085 | 55-385 | 85 cm | GOLD / BROWN |
| L-G0125 | 34-632, 34-662, 49-432, 49-432Z | 125 cm | GOLD / BROWN |
| L-G0145 | 45-630Z, 55-330Z | 145 cm | GOLD / BROWN |
| L-G0155 | 34-674, 45-632, 45-632Z, 45-630Z, 55-330Z, 55-332, 55-332Z, 55-336 | 155 cm | GOLD / BROWN |
| L-PK130 | 49-445Z | 130 cm | PINK / BLACK |
| L-PW130 | 49-432, 49-432Z | 130 cm | PINK / WHEAT |



* Chart is to be used as a guide only, it is recommended to always try on shoe for fit before purchasing

** When ordering mens styles always quote UK/AUST MEN sizing

*** When ordering ladies styles always quote METRIC sizing

For size guide and conversion chart visit www.oliver.com.au/size_guide

OLIVER FOOTWEAR SIZE CONVERSION CHART*

| UK/AUST MEN** | UK/AUST LADIES*** | METRIC | USA MEN | USA LADIES |
|---------------|-------------------|--------|---------|------------|
| 2 | 4 | 34 | 3 | 4, 4½ |
| 3 | 5 | 35 | 4 | 5, 5½ |
| 4 | 6 | 36 | 5 | 6, 6½ |
| 4½ | 6½ | 37 | 5½ | 7 |
| 5 | 7 | 38 | 6 | 7½ |
| 5½ | 7½ | | 6½ | 8 |
| 6 | 8 | 39 | 7 | 8½ |
| 6½ | 8½ | 40 | 7½ | 9 |
| 7 | 9 | 41 | 8 | 9½ |
| 7½ | 9½ | | 8½ | 10 |
| 8 | 10 | 42 | 9 | 10½ |
| 8½ | 10½ | | 9½ | 11 |
| 9 | 11 | 43 | 10 | 11½ |
| 9½ | | | 10½ | |
| 10 | | 44 | 11 | |
| 10½ | | 45 | 11½ | |
| 11 | | 46 | 12 | |
| 12 | | 47 | 13 | |
| 13 | | 48 | 14 | |
| 14 | | 49 | 15 | |
| 15 | | 50 | 16 | |
| 16 | | 51 | 17 | |
| 17 | | 52 | 18 | |

MANUFACTURER'S WARRANTY



Oliver stands for quality, comfort and protection. That's why our safety footwear is backed by a 6 month Manufacturers warranty... the Oliver Promise.

Oliver leather safety shoes and boots are warranted for six (6) months from the date of purchase against defective workmanship and/or materials when used under normal conditions for the purpose intended. The warranty is void if in the opinion of Oliver that the product has been misused or subject to excessive wear and tear including exposure to chemicals, cement, lime or heat

if the footwear has not been designed to be used in these environments.

As a requirement of this warranty the purchaser must present the footwear and provide evidence of purchase. Please return the footwear to the place of purchase.

The footwear will then be returned to Oliver for inspection by an authorized Oliver employee. If the footwear is defective they will be repaired and returned where possible, otherwise replacement footwear will be provided by Oliver.

This warranty is in addition to, and does not limit consumer's statutory rights.

Our goods come with guarantees that cannot be excluded under the Australian Consumer Law. You are entitled to a replacement or refund for a major failure and for compensation for any other reasonably foreseeable loss or damage. You are also entitled to have the goods repaired or replaced if the goods fail to be of acceptable quality and the failure does not amount to a major failure.

ELASTIC SIDED BOOTS



AT 45-627
BROWN ELASTIC SIDED
BOOT (NON METALLIC)

P6



AT 55-322
WHEAT ELASTIC
SIDED BOOT

P9



AT 55-320
BLACK ELASTIC SIDED
BOOT

P9



WB 26-620
BLACK ELASTIC SIDED
BOOTS (NON SAFETY)

P17



WB 34-620
BLACK ELASTIC
SIDED BOOT

P20



WB 34-624
BEIGE ELASTIC
SIDED BOOT

P20



WB 34-626
CLARET ELASTIC
SIDED BOOT

P20



PB 38-250
BLACK ELASTIC
SIDED BOOT

P26

LACE UP BOOTS



AT 45-632
150MM WHEAT LACE UP
BOOT (NON METALLIC)

P5



AT 45-645
150MM BLACK LACE UP
BOOT (NON METALLIC)

P5



AT 65-493
240MM BROWN PULL
ON RIGGERS BOOT

P13



WB 34-692
BROWN PULL ON
RIGGERS BOOT

P20



AT 55-332
150MM WHEAT
LACE UP BOOT

P9



AT 55-336
150MM WHEAT
LACE UP BOOT
(METATARSAL PROTECT)

P12



AT 55-337
150MM BROWN
LACE UP BOOT

P10



AT 55-345
150MM BLACK
LACE UP BOOT

P10



AT 55-346
150MM BLACK
LACE UP BOOT
(METATARSAL PROTECT)

P12



AT 65-490
150MM BROWN
LACE UP BOOT

P13



AT 65-791
350MM BLACK LACED IN
ZIP MINING BOOT

P13



WB 34-632
WHEAT LACE UP
ANKLE BOOT

P19

PULL ON BOOTS

WOMEN'S



PB 49-430
BLACK SLIP ON
SHOE (LADIES)

P25



PB 49-432Z
WHEAT ZIP SIDED
ANKLE BOOT (LADIES)

P25



PB 49-445Z
BLACK ZIP SIDED
ANKLE BOOT (LADIES)

P25



PB 49-450Z
STONE ZIP SIDED
LOW-CUT BOOT

NEW
P25

L/UP JOGGERS



WB 34-623
BLACK LACE UP
SPORTS BOOT

P20



ST 40-800
GREY FLYKNIT SHOE
(S1P HRO SRC ESD)

P23



ST 40-805
BLACK FLYKNIT SHOE
(S1P HRO SRC ESD)

NEW
P23



ST 40-810
GREY JOGGER SHOE
(S3 HRO SRC ESD)

P23



ST 40-815
BLACK JOGGER SHOE
(S3 HRO SRC ESD)

NEW
P23



ST 40-820
GREY JOGGER ANKLE
BOOT (S3 HRO SRC ESD)

P23



ST 40-825
BLACK JOGGER ANKLE
BOOT (S3 HRO SRC ESD)

NEW
P23

SLIP ON SHOES

LACE UP SHOES

WB 34-610
BLACK SLIP ON
SPORTS SHOE

P21

WB 34-615
WHEAT SLIP ON
SPORTS SHOE

P21

PB 38-275
BLACK LACE UP
EXECUTIVE
DERBY SHOE

P26

WB 34-652
BLACK LACE UP
DERBY SHOE

P21

ZIP SIDED BOOTS

AT 45-632Z
150MM WHEAT
ZIP SIDED BOOT
(NON METALLIC)

P5

AT 45-645Z
150MM BLACK
ZIP SIDED BOOT
(NON METALLIC)

P5

AT 45-652Z
150MM STONE
ZIP SIDED BOOT
(NON METALLIC)

NEW
P5

AT 55-332Z
150MM WHEAT
ZIP SIDED BOOT

P9

AT 55-345Z
150MM BLACK
ZIP SIDED BOOT

P10

AT 55-352Z
150MM STONE
ZIP SIDED BOOT

NEW
P9

AT 55-385
200MM WHEAT
ZIP SIDED BOOT

P10

AT 55-380
200MM BLACK
ZIP SIDED BOOT

P10

WB 26-660
140MM BLACK
ZIP SIDED BOOT
(NON SAFETY)

P17

WB 34-660
BLACK ZIP SIDED
ANKLE BOOT

P19

WB 34-662
WHEAT ZIP SIDED
ANKLE BOOT

P19

PB 38-265
BLACK ZIP SIDED
BOOT

P26

AT 45-630Z
130MM WHEAT
ZIP SIDED BOOT
(NON METALLIC)

P6

AT 45-640Z
130MM BLACK
ZIP SIDED BOOT
(NON METALLIC)

P6

AT 45-650Z
130MM STONE
ZIP SIDED BOOT
(NON METALLIC)

P6

AT 55-330Z
130MM WHEAT
ZIP SIDED BOOT

P11

AT 55-340Z
130MM BLACK
ZIP SIDED BOOT

P11

AT 55-350Z
130MM STONE
ZIP SIDED BOOT

P11

AT 65-490Z
150MM BROWN
ZIP SIDED BOOT

P13

WB 22-205
GREY SAFETY GUMBOOT
(METATARSAL PROTECT)

P15

HS 66-398
BLACK SMELTER BOOT
(INTERNAL METGUARD)

P27

HS 66-399
BLACK SMELTER BOOT
(EXTERNAL METGUARD)

P27

WB 24-205
GREEN SAFETY PU
GUMBOOT

NEW
P16

WB 24-210
WHITE SAFETY PU
GUMBOOT

NEW
P16

SPECIALIST BOOTS

GUMBOOTS

HS 66-460
180MM WILDLAND
FIREFIGHTERS BOOT

P28

HS 66-495
230MM LACE UP
STRUCTURAL
FIREFIGHTERS BOOT

P28

HS 66-496
300MM PULL
ON STRUCTURAL
FIREFIGHTERS BOOT

P28



by Honeywell



**LOVE
YOUR FEET
MORE.**



THE OLIVER PROMISE

✓ COMFORT

Oliver guarantee total comfort. From our energy absorbing soling technology to removable **COMFORTcushion**® PORON/PU footbeds and leather uppers, Oliver delivers superior comfort with every step you take.

✓ PERFORMANCE

Oliver provides total-foot support and superior stability which not only keeps you safe at work but comfortable all day long.

✓ DURABILITY

Oliver boots and shoes are built to last with tough, quality materials and a construction that protects your feet from hazards all year round.

OLIVER FOOTWEAR

1B, 69 Dalton Road, Thomastown,
Victoria 3074

Tel: 1300 1 BOOTS (26687)
Email: info@oliver.com.au

WWW.OLIVER.COM.AU

 [Facebook.com/oliversafetyfootwear](https://www.facebook.com/oliversafetyfootwear)

 [@oliverfootwear](https://www.instagram.com/oliverfootwear)



VERSION 08-2024

Honeywell